



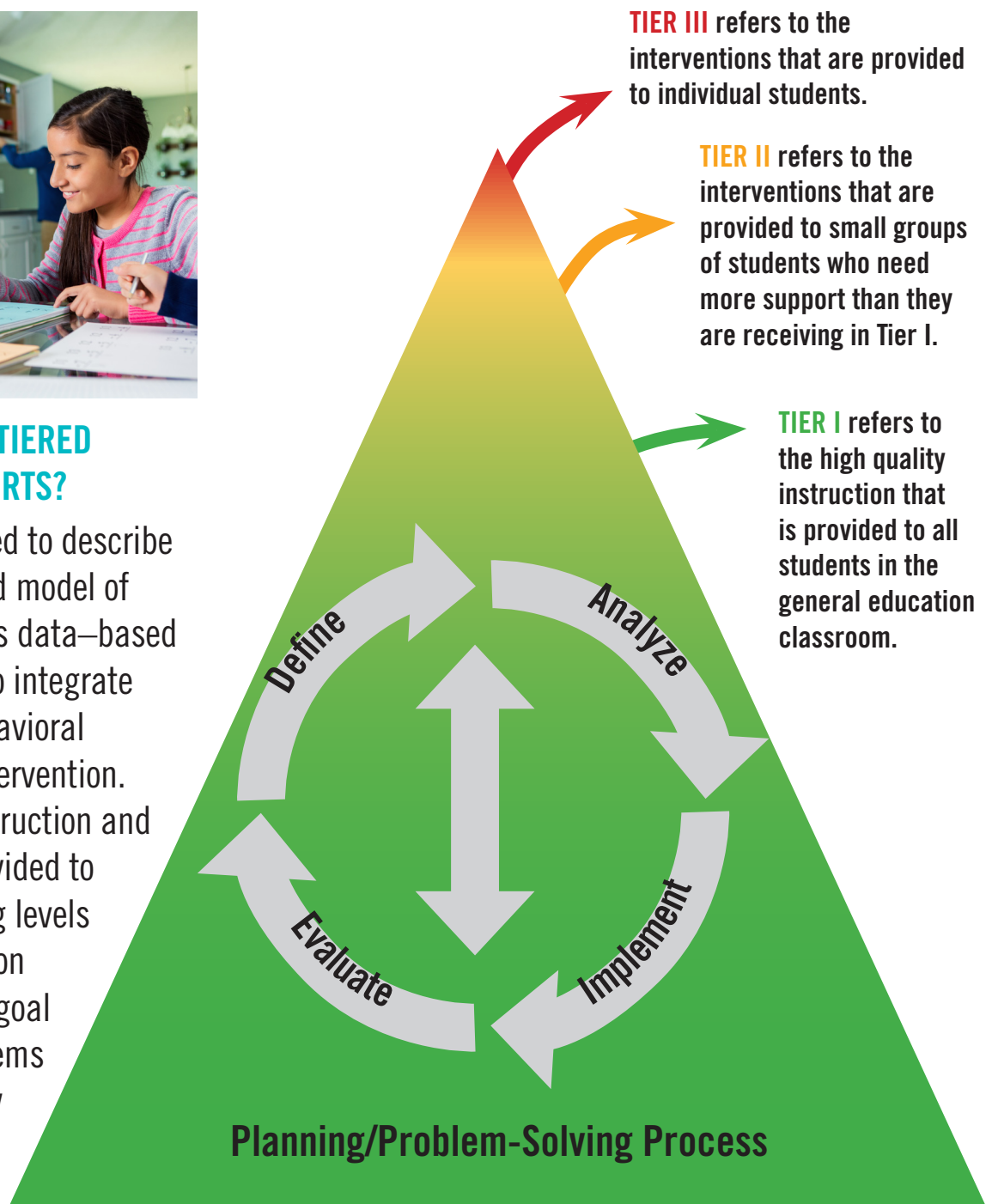
*A Multi-Tiered
System of Supports*

Information for Families



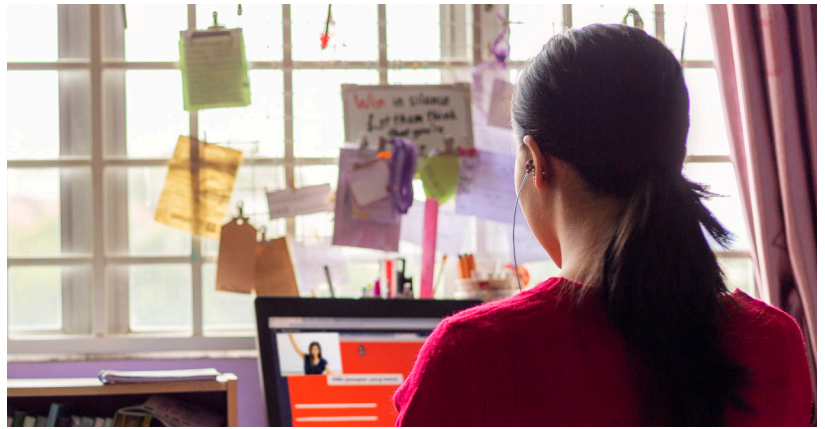
WHAT IS A MULTI-TIERED SYSTEM OF SUPPORTS?

MTSS is a term used to describe an evidence-based model of schooling that uses data-based problem-solving to integrate academic and behavioral instruction and intervention. The integrated instruction and intervention is provided to students at varying levels of intensity based on student need. The goal is to prevent problems and intervene early so that students can be successful.



WHAT CAN I EXPECT WITH MTSS?

- Frequent updates of student progress
- Early identification of academic or behavioral concerns at the first signs of difficulty.
- Help for your child that increases or decreases depending on his or her needs.
- Information and involvement in planning and providing interventions to help your child.
- Information about how your child is responding to the interventions being provided.



WHAT DO I DO IF I BELIEVE MY CHILD IS STRUGGLING?

- Talk with your child's teacher.
- Review and assist with homework assignments.
- Ask for regular progress monitoring reports.
- Celebrate your child's successes.
- Learn more about the curriculum, assessments, and interventions being used in your child's school.
- Participate in conferences and other meetings about your child.

HOW CAN I PARTICIPATE IN MTSS?

Families play a critical role in supporting what their children are learning in school. The more parents are involved in student learning, the higher the student achievement. Ask questions to learn more about MTSS in your child's school:

- Is my child successful? How do I know? If not, why and what can we do differently?
- If needed, how is additional help going to be provided? By whom? How often? For how long?
- What can I do to participate in problem-solving about my child?
- What can I do to help with the interventions for my child at home?
- How will I know if interventions are working?



*A Multi-Tiered
System of Supports*

