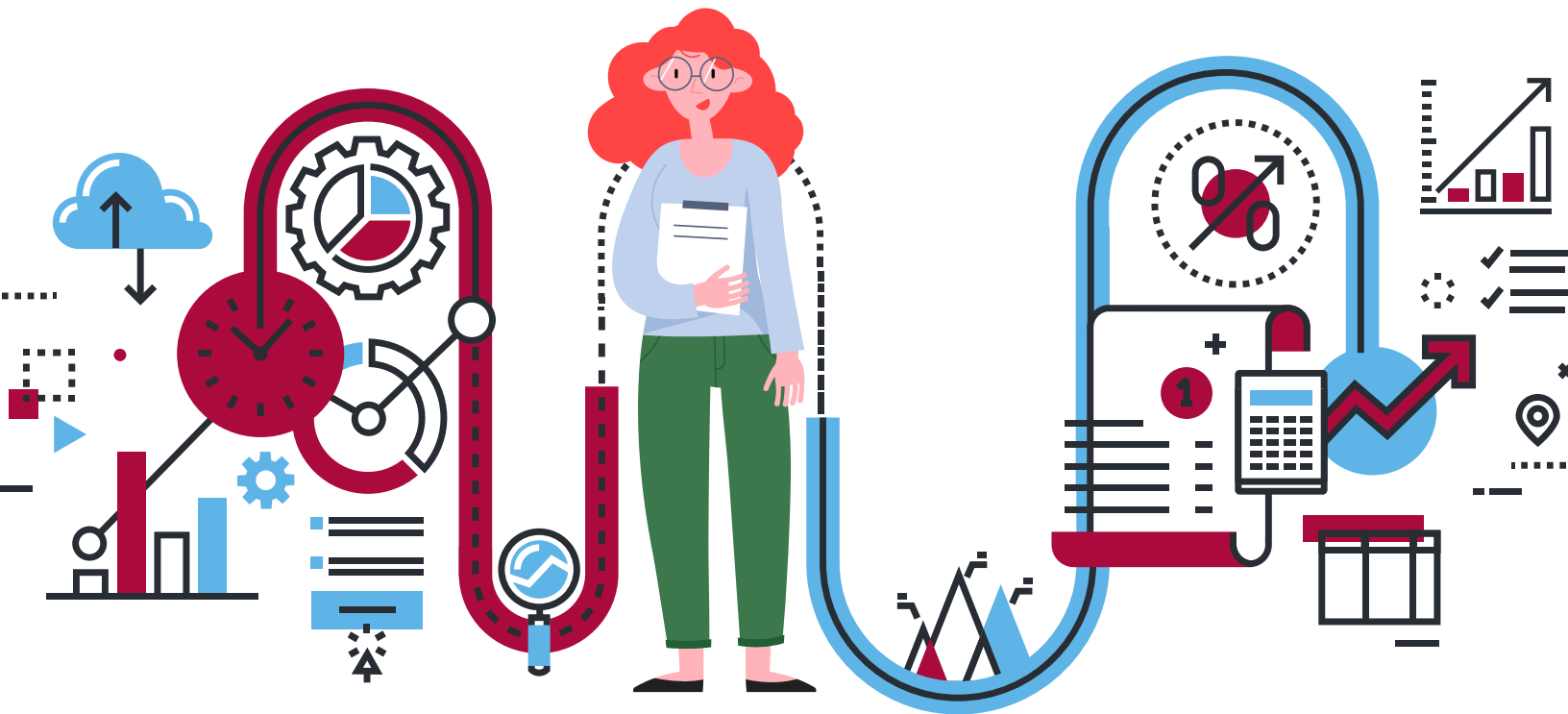


JOB SEEKERS

During the customized employment process, you are always at the center of the planning and job development activities and is always included. Employment outcomes are always in competitive, integrated settings with a wage that is equal to other employees in the same position.



What is Discovery? It is a method designed to learn about a job seeker and to focus on what environments you perform best in, what peaks your interest throughout the day, and what talents you may offer to an employer.

How long does Discovery take? The employment support person should spend 16-24 hours with you in natural settings. Discovery is usually scheduled in 1 – 3 hour blocks of time within a 4-6 week period.

Where does Discovery take place? Discovery occurs in places where you go routinely and in places where you are the most comfortable such as your home and neighborhood. It is also a time to go into new places of possible interests.

What is the Customized Employment Planning Meeting? The CEP is a meeting held after Discovery. The purpose of the meeting is for you and people who provide services and supports to you to use the Discovery information to make an action plan for you to become employed.

What next? It is best to work with the provider who conducted Discovery for job development and getting hired. They know you well at this point. Their job is to help match your talents to the needs of employers in your community. You will be actively involved in this process. Be sure to talk about your views and ideas about disclosure of your disability, accommodations, and post-employment supports.



UNIVERSITY of
SOUTH FLORIDA